

Critical Care



Julie Baldassarra, PharmD, BCPS

Clinical Pharmacy Specialist, Critical Care

Rotations:

Cardiac ICU, Medical ICU, Neuro ICU

Education:

Doctor of Pharmacy: Drake University College of Pharmacy and Health Sciences

Residency: PGY1: NorthShore University HealthSystem - Glenbrook Hospital

Practice Interests: Antimicrobial stewardship, neuroscience critical care



Arzo Hamidi, PharmD, BCCCP

Clinical Pharmacy Specialist, Critical Care

Rotations:

Medical ICU, Surgical ICU

Education:

Doctor of Pharmacy: VCU School of Pharmacy

Residency:

PGY1: Massachusetts General Hospital
PGY2 Critical Care: Duke University Hospital

Publications:

DOI: 10.1016/j.jcrc.2020.08.025
DOI: 10.1093/ajhp/zxab202
DOI: 10.1097/CCE.0000000000000367

Professional Organization Affiliations and Leadership:

Society of Critical Care Medicine

Practice Interests: Sepsis/septic shock, analgesia/sedation



Monica Jandura, PharmD, BCPS

Clinical Pharmacy Specialist, Critical Care

Rotations:

Cardiac ICU, Medical ICU, Neuroscience ICU, Surgical ICU

Education:

PharmD: University of Iowa College of Pharmacy

Residency:

PGY1: Northshore University HealthSystem - Evanston Hospital

Professional Organization Affiliations and Leadership: ASHP, ICHP, NCS, SCCM

Practice Interests: Neurocritical care, surgical critical care



Bryan Menich, PharmD, BCCCP

Clinical Pharmacy Specialist, Cardiac Surgery ICU and Neurosurgery ICU

Rotations: Cardiosciences ICU, Neurosurgical ICU I and II

Education:

PharmD: The Ohio State University, College of Pharmacy

Residency:

PGY1: Loyola University Medical Center

PGY2 Critical Care: Rush University Medical Center

Publications:

DOI: 10.1177/1060028019843664

DOI: 10.1177/0885066619843279

Professional Organization Affiliations and Leadership:

Society of Critical Care Medicine: Co-chair for the Clinical Pharmacy and Pharmacology Reception Planning Committee

Practice Interests: Cardiology (specifically heart failure, anticoagulation, and antiplatelet therapy following cardiac surgeries), ECMO



Paul O'Donnell, PharmD, BCPS, BCCCP

Clinical Pharmacy Specialist, Medical Intensive Care Unit

Rotations:

MICU I and II

Education:

University of Colorado Skaggs School of Pharmacy

Residency:

PGY1: Northwestern Memorial Hospital

PGY2 Infectious Diseases: Northwestern Memorial Hospital

Publications:

<https://scholar.google.com/citations?user=HYEJLhEAAA&hl=en>

Professional Organization Affiliations and Leadership:

SCCM – Vice Chair of Diversity & Inclusion Committee

Board of Pharmacy Specialties Critical Care Pharmacy Specialty Council –
Council Member & Chair

Practice Interests: Critical care, infectious disease, PK, HIV



Nicholas G. Panos, PharmD, BCPS, BCCCP

Clinical Pharmacy Specialist, Neurosciences Intensive Care

Rotations:

NSICU I and II

Education:

PharmD: University of Illinois at Chicago

Residency:

PGY1: University of Illinois Hospital and Health Sciences Systems

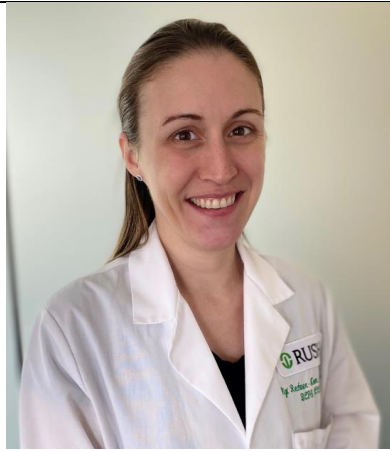
Publications:

<https://pubmed.ncbi.nlm.nih.gov/?sort=pubdate&term=Panos+NG&cauthorid=32264698>

Professional Organization Affiliations and Leadership:

Neurocritical Care Society, SCCM

Practice Interests: Neurocritical care, critical care, cerebrovascular disease, traumatic brain injury, anticoagulation reversal, sedation and analgesia in the brain injury patient, intraventricular administration of parenteral medications



Gigi Rechner-Neven, PharmD, BCPS, BCCCP

Clinical Pharmacy Specialist, Medical and Neurosciences Intensive Care Units

Rotations: MICU I and II, NSICU I and II

Education:

PharmD: University of Illinois at Chicago

Residency:

PGY1: Rush University Medical Center

PGY2 Critical Care: Rush University Medical Center

Publications:

<https://pubmed.ncbi.nlm.nih.gov/?term=georgeanna+rechner&sort=date&size=50>

Professional Organization Affiliations and Leadership: SCCM, ACCP, ASHP

Practice Interests: Shock states and vasoactive agents, analgesia and sedation, ARDS, ACLS, emergency response



Mary Jane Sullivan, PharmD, BCCCP

Clinical Pharmacy Specialist, Surgical Intensive Care Unit
Director, PGY2 Critical Care Pharmacy Residency

Rotations:

SICU I and II
Cardiosciences ICU

Education:

PharmD: Midwestern University Chicago College of Pharmacy

Residency:

PGY1: University of Chicago Medicine
PGY2 Critical Care: University of Chicago Medicine

Publications:

<https://scholar.google.com/citations?user=Ev00YcsAAAAJ&hl=en&oi=sra>

Professional Organization Affiliations and Leadership: SCCM, ASHP

Practice Interests: shock syndromes, anticoagulation, surgery and cardiovascular surgery, advancement of pharmacy residency programs



Phil Tobias, PharmD, BCCCP

Clinical Pharmacy Specialist, Medical Intensive Care Unit

Rotations:

Medical ICU

Education:

PharmD: University of Iowa

Residency:

PGY1: Providence St. Peter Hospital

PGY2 Critical Care: Rush University Medical Center

Publications:

<https://scholar.google.com/citations?user=V0xSbfcAAAAJ&hl=en>

Professional Organization Affiliations and Leadership: SCCM

Practice Interests: Pharmacokinetic alterations in the critically ill, cardiogenic shock, pulmonary hypertension, transitions of care



Carol DesLauriers, PharmD, DABAT

Assistant Vice President, Illinois Poison Center, Illinois Health and Hospital Association

Rotations:

Toxicology/Poison Center

Education:

PharmD: University of Illinois at Chicago

Residency: N/A

Publications:

https://pubmed.ncbi.nlm.nih.gov/?term=DesLauriers+C&cauthor_id=31797705

Professional Organization Affiliations and Leadership:

American Association of Poison Control Centers (President-Elect)

American Academy of Clinical Toxicology

Illinois Council of Health Systems Pharmacists

Faculty, Toxikon Consortium Medical Toxicology Fellowship Program

Clinical Assistant Professor of Pharmacy Practice, Rosalind Franklin University of Medicine and Science

Adjunct Clinical Assistant Professor, College of Pharmacy

Affiliate Clinical Faculty, Southern Illinois University

Practice Interests: Pediatric unintentional ingestions, Emergency Response, Public Health, Poison Center Administration

Emergency Medicine



Joshua M. DeMott, PharmD, MSc, BCPS, BCCCP

Clinical Pharmacy Specialist, Emergency Medicine

Rotations:

Emergency Medicine

Education:

PharmD: Ferris State University

Master of Clinical Research: Rush University

Residency:

PGY1: Saint Mary's Health Care

Publications:

<https://scholar.google.com/citations?user=DfBCE8IAAAAJ&hl=en>

Professional Organization Affiliations and Leadership:

American College of Clinical Pharmacy (ACCP): EMED & CC PRN Research Committees, member

Society of Critical Care Medicine (SCCM): Research and Scholarship Committee, member
Illinois Council of Health-System Pharmacists (ICHSP): member

Practice Interests: Emergency Medicine, Clinical Research



Stephany Nuñez Cruz, PharmD, BCPS

Clinical Pharmacy Specialist, Emergency Medicine

Rotations:

Emergency Medicine

Education:

Doctor of Pharmacy: University of Florida, Jacksonville, FL

Residency:

PGY1: Piedmont Columbus Regional, Columbus, GA

PGY2 Emergency Medicine: Rush University Medical Center, Chicago, IL

Publications:

<https://scholar.google.com/citations?user=o4hKsmYAAAAJ&hl=en>

Professional Organization Affiliations and Leadership:

American College of Clinical Pharmacy (ACCP)

American Society of Health-System Pharmacists (ASHP)

Practice Interests:

Emergency Medicine, resuscitation, neurology, arrhythmia, alcohol withdrawal syndrome



Giles W. Slocum, PharmD, BCCCP

Clinical Pharmacy Specialist, Emergency Medicine

Assistant Professor, Department of Emergency Medicine, Rush Medical College

PGY-2 Emergency Medicine Residency Program Director

Rotations:

Emergency Medicine

Education: PharmD: University of Iowa

Residency:

PGY1: Swedish American Hospital

PGY2 Emergency Medicine: University of Rochester Medical Center

Publications:

<https://scholar.google.com/citations?user=0qwylIsAAAAJ&hl=en&oi=ao>

Professional Organization Affiliations and Leadership: ACCP

Practice Interests: Emergency medicine, hemophilia, toxicology

Pediatrics



Jessica L. Jacobson, PharmD, BCPS, BCPPS

Clinical Pharmacy Specialist, Pediatrics

PGY-2 Pediatric Residency Program Director

Rotations:

Pediatric Intensive Care Unit

Education:

PharmD: University of Illinois at Chicago

Residency:

PGY1: University of Illinois Hospital and Health Sciences System

PGY2 Pediatrics: University of Illinois Hospital and Health Sciences System

Publications:

<https://scholar.google.com/citations?user=TTPx4HkAAAAJ&hl=en&oi=ao>

Professional Organization Affiliations and Leadership:

Pediatric Pharmacy Association (PPA): member

American Society of Health-System Pharmacists (ASHP): member

Practice Interests: Pediatric critical care, pediatric cardiology, pediatric sedation/analgesia, pediatric medication safety