

Medicine – Surgery



Melissa Kocek, PharmD, BCPS

Director, PGY2 Internal Medicine Residency Program

Rotations:

Internal Medicine I, II & III

Education:

University of Illinois at Chicago College of Pharmacy

Residency:

PGY1: Rush University Medical Center

Publications:

- **Kocek M**, Wilcox R, Crank C, Patra K. Evaluation of the relationship between opioid exposure in extremely low birth weight infants in the neonatal intensive care unit and neurodevelopmental outcome at 2 years. *Early Hum Dev.* 2016;92:29-32.

Professional Organization Affiliations and Leadership:

ICHP

Practice Interests:

Transitions of care, inflammatory bowel disease, chronic heart failure



Alifiya Hyderi, PharmD

Coordinator, PGY1 Residency Program

Rotations:

Medical Observation/Surgery

Education:

University of Southern California

Residency:

NorthShore University Health System

Publications:

- Ng TM, Konopka E, **Hyderi AF**, et al. Comparison of bumetanide- and metolazone-based diuretic regimens to furosemide in acute heart failure. *J Cardiovasc Pharmacol Ther.* 2013;18(4):345-353. doi:10.1177/1074248413482755
- Ng TM, Ackerbauer KA, **Hyderi AF**, Hshieh S, Elkayam U. Comparative effects of nesiritide and nitroglycerin on renal function, and incidence of renal injury by traditional and RIFLE criteria in acute heart failure. *J Cardiovasc Pharmacol Ther.* 2012;17(1):79-85. doi:10.1177/1074248411406441
- Scientific Abstract: Ackerbauer KA, Ng TMH, **Hyderi AF**, Hshieh S, Elkayam U. Comparative effects of nesiritide and nitroglycerin on renal function and incidence of renal injury by traditional and RIFLE criteria in acute heart failure. *Pharmacotherapy* 2010;373e.

- Scientific Abstract: Ng TMH, Konopka E, **Hyderi AF**, Hsheih S, Tsuji Y, Kim BJ, Han SY, Jeng AI, Phan DH, Lou M, Elkayam U. Retrospective comparison of refractory diuretic regimens in acute heart failure. J Am Coll Cardiol 2011;57(14 suppl A):1017-24.
- Poster: Williams, KM, Schriver, K, Torres, T, Racelis, MC, **Hyderi, A**, Fogg, L, Semanik, P, & Barrett, ER. (2020). Poster: Improving the Hospital Consumer Assessment of Healthcare Providers and Systems (HCAHPS) Quality Measure “Communicating About Medications” in an Inpatient Orthopedic Unit. Rush System Nursing Research/EBP 2020 Symposium, February 25, Naperville, IL.
- Poster: Williams, KM, Schriver, K, Torres, T, Racelis, MC, **Hyderi, A**, Fogg, L, Semanik, P, & Barrett, ER. (2020). Poster: Improving the Hospital Consumer Assessment of Healthcare Providers and Systems (HCAHPS) Quality Measure “Communicating About Medications” in an Inpatient Orthopedic Unit at Midwest Nursing Research Society 44th Annual Conference, April 1-4, Schaumburg, IL

Professional Organization Affiliations and Leadership:

ASHP

ICHP (Leadership Position: Northern Regional Director)

ILPRC (Position: Planning Committee)

Practice Interests:

Internal Medicine, Anticoagulation



Kirk Dennis, PharmD, BCPS

Rotations:

Internal Medicine I, II & III

Education:

Midwestern University Chicago College of Pharmacy

Residency:

PGY1: Rush University Medical Center

Professional Organization Affiliations and Leadership:

ASHP

ICHP

ACCP

Practice Interests:


Adult patient education, interdisciplinary process improvement, Internal medicine



Mitchell Cunningham, PharmD, BCPS

Rotations:

Neurology

	<p>Education: West Virginia University School of Pharmacy, Morgantown, WV</p> <p>Residency: PGY1: Rush University Medical Center</p> <p>Professional Organization Affiliations and Leadership: ICHP</p> <p>Practice Interests: Vascular neurology, internal medicine, clinical informatics</p>
	<p>Luke Hvass, Pharm.D., BCPS</p> <p>Rotations: Internal Medicine I, II & III</p> <p>Education: Creighton University School and Pharmacy and Health Sciences</p> <p>Residency: PGY-1: Wheaton Franciscan Healthcare, St. Joseph Campus PGY-2 Internal Medicine: University of Chicago</p> <p>Professional Organization Affiliations and Leadership: ICHP</p>

Practice Interests:

Anticoagulation, hyperglycemia, renal dysfunction/ESRD



Monika Hornung, PharmD, BCPS

Rotations:

Internal Medicine I, II & III
Nephrology

Education:

Midwestern University Chicago College of Pharmacy

Residency:

PGY1: Rush University Medical Center

Publications:

- Arif S, D'Souza J, **Gil M**, Gim S. Vorapaxar for reduction of thrombotic cardiovascular events in myocardial infarction and peripheral artery disease. Am J Health Syst Pharm. 2015; 72:1615-22.
- **Gil M**, Humlicek T, Pisani BA, Mendez JC, Oppermann M, Prod M, Kanangat S. Heart Transplant after Antibody Reduction with Bortezomib and Plasmapheresis in a Highly Sensitized Patient. Human Immunology. 2014; 75:133
- **Gil M**, Stelmokas D, Shier G, Johnson T, Sims S. Impact of the Combined Social Worker and Pharmacist Program to Reduce Hospital Readmissions. J Manag Care Pharm. 2013; 19 (7):558-63.

- Limoges DR, Burda AM, **Gil M**, Rothman JJ. Silibinin for cyclopeptide mushroom poisonings. Am J Health Syst Pharm. 2012; 69(21):1856-60.

Professional Organization Affiliations and Leadership:

- RUMC Medication Use Evaluation Subcommittee (Co-Chair)
- Vizient: Programming, Innovation & Engagement Committee (Member)
- ACCP: AMED Training & Travel Awards Committee (Member)
- Affiliations: ICHP, SHM

Practice Interests:

Internal Medicine, Renal Disease, Anticoagulation, Heart Failure



Tiffany King, PharmD

Rotations:

Medical Oncology

Education:

Temple University School of Pharmacy, Philadelphia, PA

Residency:

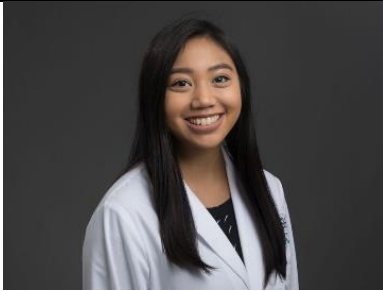
PGY1: Pennsylvania Hospital, Philadelphia, PA

Professional Organization Affiliations and Leadership:

ICHP Professional Affairs Committee
ACCP

Practice Interests:

Internal Medicine and Medical Oncology



Jennifer Sotto, PharmD, BCPS

Rotations:

Internal Medicine I, II & III

Education:

University of Illinois at Chicago

Residency:

PGY1: Rush University Medical Center

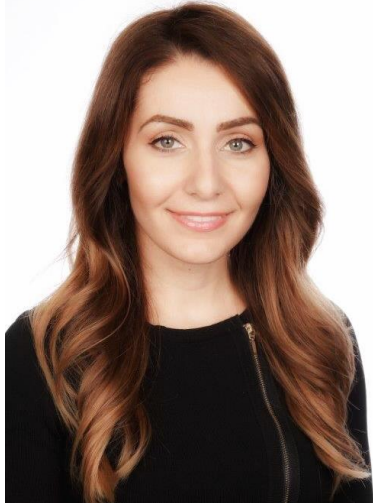
Professional Organization Affiliations and Leadership:

ICHP

Practice Interests:

Anticoagulation, Chronic Heart Failure, Renal Disease

Cardiology



Sally Arif, PharmD, BCPS, AQ-Cardiology

Rotations:

Cardiology-oncology

Education:

Doctor of Pharmacy: The University of Kansas School of Pharmacy

Residency:

PGY1: Inova Fairfax Hospital

PGY2 Internal Medicine: Indiana University Health

Publications:

- https://scholar.google.com/citations?user=-RvfY_EAAAAJ&hl=en

Professional Organization Affiliations and Leadership:

- AACP Health Disparities and Cultural Competency SIG Chair
- ACCP Cardiology and Global Health PRN member
- American College of Cardiology member

Practice Interests:

Chemotherapy-induced cardiac disease, atrial fibrillation, heart failure

Ambulatory Care



Alvin Godina, PharmD, BCPS, BCACP

Rotations:

Ambulatory Care

Education:

University of Illinois College of Pharmacy

Residency:

PGY1: John H. Stroger, Jr. Hospital of Cook County

Professional Organization Affiliations and Leadership:

ICHP - Ambulatory Care Network, Billing Subcommittee

Practice Interests:

Anticoagulation, diabetes, pharmacist billing

Critical Care



Georgeanna Rechner-Neven, PharmD, BCPS, BCCCP

Rotations:

Medical Intensive Care
Neurosciences Intensive Care

Education:

Doctor of Pharmacy, University of Illinois at Chicago
Bachelor of Science in Chemistry, University of Illinois at Urbana-Champaign

Residency:



PGY1: Pharmacy Practice, Rush University Medical Center
PGY2: Critical Care Pharmacy, Rush University Medical Center

Publications:

<https://pubmed.ncbi.nlm.nih.gov/?term=georgeanna+rechner&sort=date&size=50>

Professional Organization Affiliations and Leadership:

SCCM, ACCP, ASHP

	<p>Practice Interests: Shock states and vasoactive agents, analgesia and sedation, ARDS, ACLS, emergency response</p>
	<p>Julie Baldassarra, PharmD, BCPS Clinical Pharmacy Specialist, Critical Care</p> <p>Rotations: Cardiac ICU, Medical ICU, Neuro ICU</p> <p>Education: Doctor of Pharmacy: Drake University College of Pharmacy and Health Sciences</p> <p>Residency: PGY1: NorthShore University HealthSystem - Glenbrook Hospital</p>
	<p>Arzo Hamidi, PharmD, BCCCP</p> <p>Rotations: Medical ICU, Surgical ICU</p> <p>Education: Doctor of Pharmacy: Virginia Commonwealth University School of Pharmacy</p> <p>Residency: PGY1: Massachusetts General Hospital PGY2 Critical Care: Duke University Hospital</p>

Publications:

DOI: 10.1016/j.jcrc.2020.08.025

DOI: 10.1093/ajhp/zxab202

DOI: 10.1097/CCE.0000000000000367

Professional Organization Affiliations and Leadership:

Society of Critical Care Medicine

Practice Interests:

Sepsis/septic shock, analgesia/sedation



Monica Jandura, PharmD, BCPS

Clinical Pharmacy Specialist, Critical Care

Rotations:

Cardiac ICU, Medical ICU, Neuroscience ICU, Surgical ICU

Education:

PharmD: University of Iowa College of Pharmacy

Residency:

PGY1: Northshore University HealthSystem - Evanston Hospital

Professional Organization Affiliations and Leadership: ASHP, ICHP, NCS, SCCM

Practice Interests: Neurocritical care, surgical critical care



Paul O'Donnell, PharmD, BCPS, BCCCP

Rotations:

MICU

Education:

University of Colorado Health Sciences Center

Residency:

PGY1: Northwestern Memorial Hospital

PGY2: Northwestern Memorial Hospital

Publications:

<https://scholar.google.com/citations?user=HYEJLhEAAAAJ&hl=en>

Professional Organization Affiliations and Leadership:

SCCM – Vice Chair of Diversity & Inclusion Committee

Board of Pharmacy Specialties Critical Care Pharmacy Specialty Council –
Council Member & Chair

Practice Interests:

Critical care, infectious disease, PK, HIV

Emergency Medicine



Giles W. Slocum, PharmD

Director, PGY2 Emergency Medicine Residency

Rotations:

Emergency Medicine

Education:

Doctor of Pharmacy, University of Iowa, Iowa City, IA

Bachelor of Sciences in Biology, Iowa State University, Ames, IA

Residency:

PGY1: Swedish American Hospital, Rockford, IL

PGY2: University of Rochester Medical Center, Rochester, NY

Publications:

<https://scholar.google.com/citations?user=0qwyllsAAAAJ&hl=en>

Professional Organization Affiliations and Leadership:

American College of Clinical Pharmacy (ACCP)

Practice Interests:

Emergency medicine, hemophilia, toxicology



Joshua M DeMott, PharmD, MSc, BCPS, BCCCP

Rotations:

Emergency Medicine

Education:

Doctor of Pharmacy, Ferris State University, Big Rapids, MI
Master of Clinical Research, Rush University, Chicago, IL

Residency:

PGY1, Saint Mary's Health Care, Grand Rapids, MI

Publications:

<https://scholar.google.com/citations?user=DfBCE8IAAAAJ&hl=en>

Professional Organization Affiliations and Leadership:

American College of Clinical Pharmacy (ACCP): EMED & CC PRN Research Committees, member
Society of Critical Care Medicine (SCCM): Research and Scholarship Committee, member
Illinois Council of Health-System Pharmacists (IHP): member

Practice Interests:

Emergency Medicine, Clinical Research



Stephany Nunez Cruz, PharmD, BCPS

Rotations:

Emergency Medicine

Education:

Doctor of Pharmacy, University of Florida, Jacksonville, FL

Residency:

PGY1: Piedmont Columbus Regional, Columbus, GA

PGY2 Emergency Medicine: Rush University Medical Center, Chicago, IL

Publications:

<https://scholar.google.com/citations?user=o4hKsmYAAAAJ&hl=en>

Professional Organization Affiliations and Leadership:

American College of Clinical Pharmacy (ACCP)

American Society of Health-System Pharmacists (ASHP)

Practice Interests:

Emergency Medicine, resuscitation, neurology, arrhythmia, alcohol withdrawal syndrome

Solid Organ Transplant



Nicole Alvey, PharmD, BCPS

Director, PGY2 Solid Organ Transplant Residency

Rotations:

Inpatient Solid Organ Transplant
Outpatient Solid Organ Transplant
Quality Assurance and Performance Improvement
Research and Medical Writing

Education:

Doctor of Pharmacy: St. Louis College of Pharmacy

Residency:

PGY1: Rush University Medical Center
PGY2: Barnes Jewish Hospital Solid Organ Transplant

Publications:

<https://scholar.google.com/citations?hl=en&user=ffvKep8AAAAJ>

Professional Organization Affiliations and Leadership:

- American Society of Transplantation (AST): Transplant Pharmacy Community of Practice-EC Board Member-At-Large, Chair of Online Programming Committee (2018-2020), Member (2008-present), Women's Health Community of Practice-Member (2017-present)

- American College of Clinical Pharmacy (ACCP): Immunology and Transplantation Research and Practice Network- EC Board Secretary/Treasurer (2017-2018), Member (2007-present), BCTXP Preparatory/Review Course Peer Reviewer (2020-present)
- American Society of Health-Systems Pharmacists (ASHP): Guest Surveyor for PGY2 Solid Organ Transplant Residencies (2016-present), Member (2005-present)
- Illinois Transplant Pharmacist Association: Vice-President (2011-2015), President (2015-2016), Past-President (2016-2017), member (2008-present)
- Affiliations: AACP, ACCP IMTR PRN, APhA, ASHP, AST, IPhA, ITPA

Practice Interests:

Immunosuppression in the older population, transitions of care, pharmacokinetics of immunosuppression, cell-free DNA in transplant rejection, kidney transplant, liver transplant, pancreas transplant, advancement of post-graduate pharmacy training



Marissa Brokhof, PharmD, BCPS

Rotations:

SOT, SOT Outpatient Clinic, Abdominal SOT Inpatient I/II/III, Abdominal SOT Outpatient I/II/III, Transplant Hepatology

Education:

Midwestern University Chicago College of Pharmacy

Residency:

PGY1: Rush University Medical Center

PGY2: University of Wisconsin at Madison Solid Organ Transplant

Publications:


- Rohde KA, Schlei ZW, Katers KM, Weber AK, **Brokhof MM**, Hawes DS, Radford KL, Francois ML, Menninga NJ, Cornwell R, Benca R, Hayney MS, Dopp JM. Insomnia and Relationship With Immunosuppressant Therapy After Lung Transplantation. *Prog Transplant*. 2017;27(2):167-174. doi:10.1177/1526924817699960
- Menninga NJ, Rohde KA, Schlei ZW, Katers KM, Weber AK, **Brokhof MM**, Hawes DS, Radford KL, Francois ML, Cornwell RD, Benca R, Hayney MS, Dopp JM. Restless Legs Syndrome Following Lung Transplantation: Prevalence and Relationship With Tacrolimus Exposure. *Prog Transplant*. 2016;26(2):149-156.

- Fayek SA, Beshears E, Lieber R, Alvey N, Sauer A, Poirier J, Hollinger EF, Olaitan OK, Jensik S, Geyston J, **Brokhof MM**, Hodowanec AC, Hertl M, Simon DM. Extended Low-Dose Valganciclovir Is Effective Prophylaxis Against Cytomegalovirus in High-Risk Kidney Transplant Recipients With Near-Complete Eradication of Late-Onset Disease. *Transplant Proc*. 2016;48(6):2056-2064.e1.
- **Brokhof MM**, Sollinger HW, Hager DR, et al. Antithymocyte globulin is associated with a lower incidence of de novo donor-specific antibodies in moderately sensitized renal transplant recipients [published correction appears in *Transplantation*. 2016 Sep;100(9):e54]. *Transplantation*. 2014;97(6):612-617.
- **Brokhof MM**, Hager DR, Djamali A, Vidyasagar V (2014) Hematologic Complications of Transplantation. In: Weir M., Lerma E. (eds) *Kidney Transplantation*. Springer, New York, NY.
- **Brokhof MM**, Foster SL, Hayney MS. New options for influenza vaccines: quadrivalent, recombinant, and cell culture. *J Am Pharm Assoc (2003)*. 2013;53(5):545-549.

Professional Organization Affiliations and Leadership:

ACCP: IM/TR Historian/Communications Committee Co-Chair

Affiliations: AST, ITPA

	<p>Practice Interests: Immunosuppression, Medication Adherence, Liver Transplantation, End-Stage Liver Disease, Hepatocellular Carcinoma</p>
	<p>Nicole Kenyon, PharmD, BCPS</p> <p>Rotations: Inpatient Solid Organ Transplant, Outpatient Solid Organ Transplant, Transplant Nephrology</p> <p>Education: Doctor of Pharmacy: Midwestern University Chicago College of Pharmacy</p> <p>Residency: PGY1: University of Iowa Hospitals/Clinics PGY2: University of Utah Hospitals/Clinics Solid Organ Transplant</p> <p>Professional Organization Affiliations and Leadership:</p> <ul style="list-style-type: none"> • Affiliations: <ul style="list-style-type: none"> American Society of Transplantation American College of Clinical Pharmacy Illinois Transplant Pharmacist Association <p>Practice Interests: Kidney transplant, liver transplant, pancreas transplant, medication compliance pre- and post-transplant</p>



Lance Lineberger, PharmD

Rotations:

Inpatient Solid Organ Transplant, Outpatient Solid Organ Transplant

Education:

Doctor of Pharmacy: University of Tennessee College of Pharmacy

Residency:

PGY1: Ochsner Medical Center

PGY2: Rush University Medical Center PGY2 Solid Organ Transplant

Professional Organization Affiliations and Leadership:

- American Society of Transplantation (Member 2019 – Present)
- Illinois Transplant Pharmacist Association (Member 2018 – Present)
- American Society of Hospital Pharmacy (Member 2016 – Present)
- Phi Delta Chi (Member 2013 – Present)

Practice Interests:

Kidney transplant, liver transplant, infectious diseases, and ambulatory care

Infectious Disease



Hayley Hodgson, PharmD

Rotations:

Infectious Disease

Education:

Doctor of Pharmacy: University of Georgia College of Pharmacy

Residency:

PGY1: Rush University Medical Center

PGY2 Infectious Diseases: Northwestern University Chicago College of Pharmacy/Rush University Medical Center

Publications:

- **Hodgson H**, Sim T, Gonzalez H, Aziz M, Rhee Y, Lewis PO, Shields B, Wang SK. Successful treatment of cerebral toxoplasmosis using pyrimethamine oral solution compounded from inexpensive bulk powder. Open Forum Infect Dis. 5.4 (2018): ofy055.
- **Hodgson H**, Gandhi AS, Clark SM. Role of pharmacist interventions in the safe administration of anti-CD20 monoclonal antibodies. J Hematol Oncol Pharm. December 2018.

Professional Organization Affiliations and Leadership:

Affiliations: ACCP, SIDP, IDSA

	<p>Practice Interests: Gram-negative resistance mechanisms, COVID-19 therapeutics, antimicrobial stewardship, penicillin allergy de-labeling</p>
	<p>Christy Varughese, PharmD, BCPS</p> <p>Rotations: Infectious Disease</p> <p>Education: Doctor of Pharmacy: Massachusetts College of Pharmacy Master of Science: Rush University</p> <p>Residency: PGY1: Rush University Medical Center PGY2 Infectious Diseases/Solid Organ Transplant: Yale New Haven Hospital</p> <p>Publications:</p> <ul style="list-style-type: none"> • https://www.researchgate.net/scientific-contributions/2057689586_Christy_Varughese <p>Professional Organization Affiliations and Leadership: Affiliation: ACCP</p> <p>Practice Interests: Invasive fungal infections, multi-drug resistance, antimicrobial stewardship</p>