

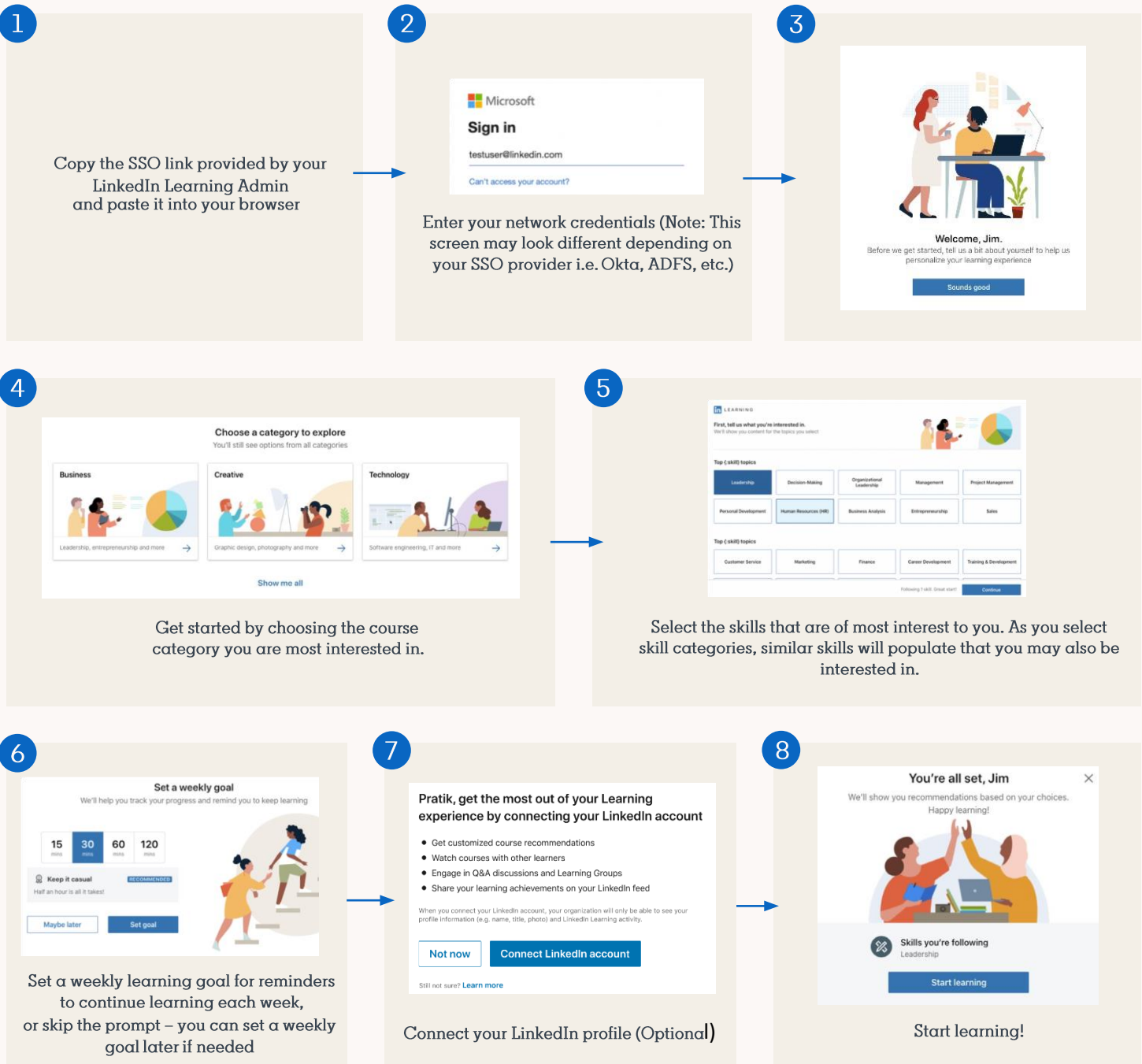
Welcome to LinkedIn Learning

We're glad you're here

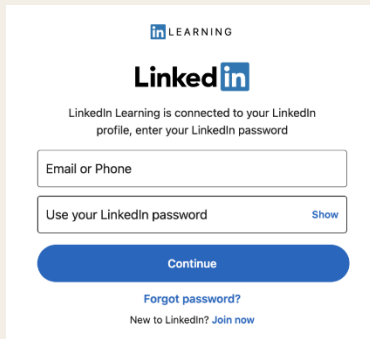
LinkedIn Learning is a highly personalized learning experience designed to help you achieve your professional goals through learning you can access anywhere and immediately apply.



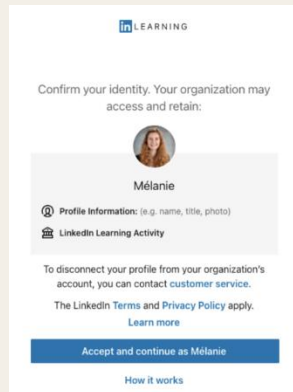
It's easy to activate your LinkedIn Learning account with your SSO credentials



If you choose to connect your LinkedIn account...



If you choose to connect a LinkedIn account while activating, please use the email and password you used when registering (may be your personal email). Click on *Join now* if you don't have an existing one



Next, you will see a screen asking you to confirm your identity. Click accept and continue.

FAQ

- Do I have to create a duplicate LinkedIn account using my institutional email?

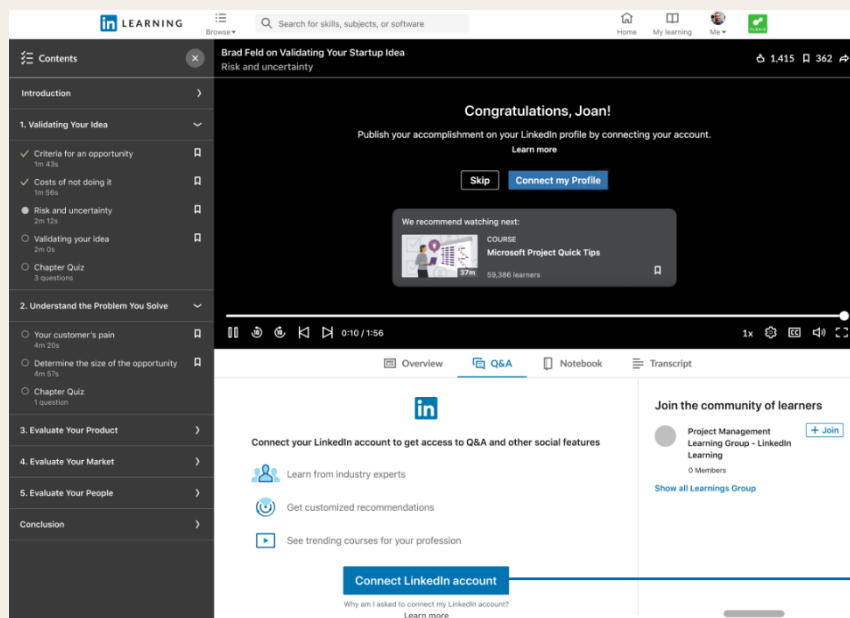
No. You must have one unique LinkedIn account, please use the same email you used when registering to the LinkedIn platform (may be your personal email)

- Can I skip this step and not connect the LinkedIn account?

Yes, just click *Not now* when asked during activation

Access advanced features of LinkedIn Learning

Here are some examples of the advanced features that will be available when your LinkedIn account is connected to your LinkedIn Learning license, for a truly personalized experience



Share your accomplishments with your LinkedIn network

Join the community through related Learning Group(s)

Ask questions and review answers in the Q&A section of courses

Note: Other prompts to connect the LinkedIn account may appear In-Product to encourage users making the most of the LinkedIn Learning (Home page, Search page, Course Review, Office Hours, Watch Party, etc.)