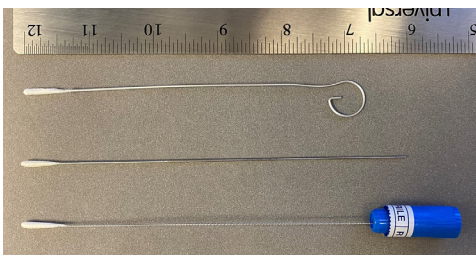
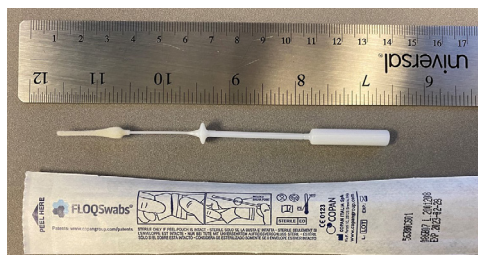


Swab Differences for POC and Standard COVID Testing

Test	Swab	Procedure
COVID-19 standard test	1 Nasopharyngeal swabs (preferred)	Gently advance swab straight back and down along nasal floor into nasopharynx until resistance met (see video for technique). <ul style="list-style-type: none"> Spin swab several times for 10 – 15 seconds. Withdraw and place into viral transport medium.
	2 Mid-turbinate swab (if NPS not available)	Direct midturbinate swab straight back along the nasal floor until the stopper hits the nostril. <ul style="list-style-type: none"> Spin swab several times for 10 – 15 seconds Repeat with the same swab on the other side. Place MTS swab in viral transport medium.
COVID point of care (POC test)	3 Foam tipped oral-nasal swab (comes with the POC test)	Direct nasal swab. Insert nasal swab into the nostril with the most drainage or congestion. <ul style="list-style-type: none"> Gently insert swab, until resistance is met (near the level of the nasal turbinates, less than one inch into nostril). Rotate the swab against the nasal wall several times and gently remove the swab. Using the same swab, repeat sample collection in the other nostril. Perform POCT immediately if on a unit with an ID NOW test device. If no test device on unit, place swab back into sterile wrapper, label wrapper with patient label, date/time/initials of collector and place dry swab in wrapper in specimen biohazard bag. Call for runner to deliver sample to micro ASAP.



1 Nasopharyngeal swab (NPS)



2 Mid-turbinate swab (MTS)



3 Foam tipped oral-nasal swab