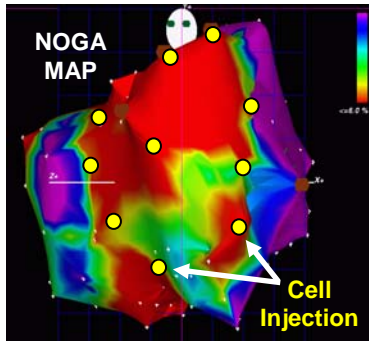


Welcome to the Spring 2007 issue of the RIHVR "Research Update". The purpose of this bulletin is to update health professionals about current research trials offered by the RIHVR group at Rush University Medical Center.



## Stem Cells for Severe Angina

Patients with severe angina pectoris refractory to medical therapy who are not candidates for CABG or PCI will be randomized (2:1) to percutaneous intramyocardial injections of autologous CD34+ stem cells or placebo. The goal of the ACT34-CMI trial is to reduce angina frequency by stimulating myocardial angiogenesis.

**Dr. Gary Schaer** (PI), 312.942.4655. [Gary\\_Schaer@RUSH.edu](mailto:Gary_Schaer@RUSH.edu)

**Poorna Nagarajan** (Study Coordinator), 312.942.3391.

## Gene Therapy for Claudication



Patients with peripheral arterial disease and intermittent claudication will be randomized (3:1) to Ad2/HIF-1 $\alpha$ /VP16 (gene product) or placebo administered by IM injections in each leg. The study goal is to stimulate angiogenesis, reduce claudication and improve walking distance.

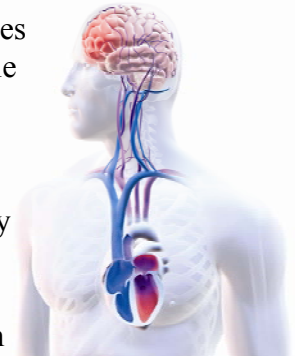
**Dr. Gary Schaer** (PI),  
312.942.4655

**Dr. Jeff Snell** (PI),  
312.942.6569

**Kerry Abdul-Ahad** (Study  
Coordinator), 312.942.8144

## PFO Closure for Migraine Headaches

New research suggests that migraine headaches may be associated with a patent foramen ovale (PFO). The **MIST II trial** will investigate whether PFO closure with the BioSTAR® Septal Repair Implant System can reduce migraine headaches in patients with refractory migraine with aura. BioSTAR® is the first **bioabsorbable** septal occlusion device, incorporating a collagen matrix on the proven STARFlex® alloy framework.



**Dr. Cliff Kavinsky** (PI), 312.942.8771

**Kerry Abdul-Ahad** (Study Coordinator), 312.942.8144

## Carotid Stenting



The **ACT 1 trial** will randomize (3:1) patients with significant carotid disease but no symptoms to carotid stenting (Xact stent and Emboshield distal protection) or surgical carotid endarterectomy. Study provides asymptomatic patients with preventative care against future strokes.

**Dr. Jeff Snell** (PI), 312.942.6569. [jsnell@RUSH.edu](mailto:jsnell@RUSH.edu)

**Catherine Glase** (Study Coordinator), 312.942.8901

Contact the RIHVR Group Manager:

Catherine Glase RN MS. (312) 942-8901. [Catherine\\_J\\_Glase@rush.edu](mailto:Catherine_J_Glase@rush.edu)

[www.rush.edu/RIHVR](http://www.rush.edu/RIHVR)