

Gastrointestinal and Liver Pathology at Rush

1750 W. Harrison St., Suite 570, Chicago, IL 60612 ♦ (312) 942-5227 phone ♦ (312) 942-4228 fax

Case of the Month Question – November 2010

Contributed by Drs. Marlene Gallegos and Shriram Jakate

A 55 y/o obese Caucasian male with a past medical history of hypertension and chronic gastroesophageal reflux disease (GERD) presented with severe heartburn. An endoscopic image and a microphotograph are provided below (Figures 1 and 2).

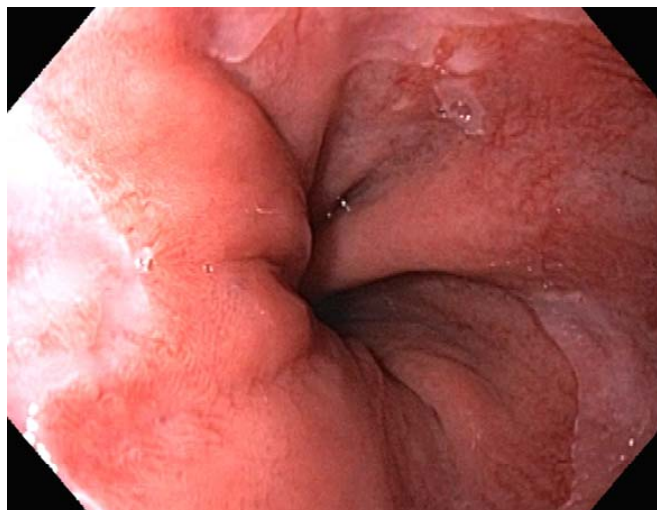


Fig. 1

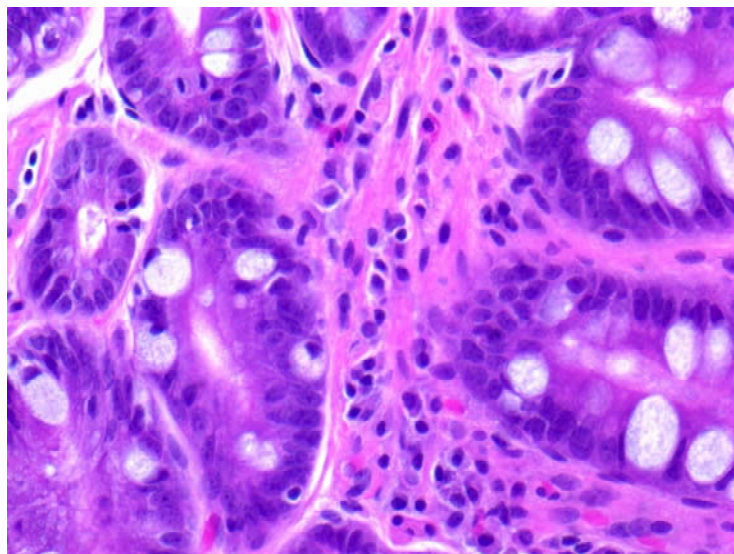


Fig. 2