

Gastrointestinal and Liver Pathology at Rush

1750 W. Harrison St., Suite 570, Chicago, IL 60612 ♦ (312) 942-5227 phone ♦ (312) 942-4228 fax

Case of the Month Question – May 2010

Contributed by Drs. Marlene Gallegos and Shriram Jakate

A 62 y/o Caucasian male with a past medical history of coronary artery disease and hypertension presented with weakness, weight loss, and right-sided abdominal pain for 3 months. CT scan showed a 5.0 cm liver mass and no evidence of cirrhosis. In addition, a 2.0 cm mass was identified in the right kidney. Serum AFP levels were not elevated. A needle biopsy of the liver mass was performed (Figures 1 and 2).

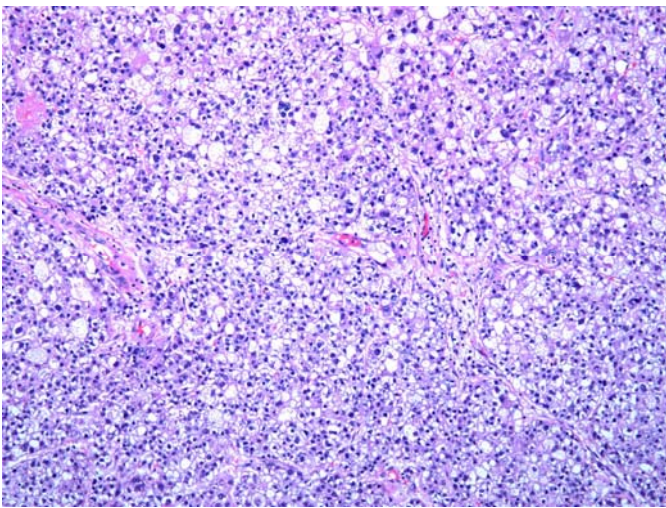


Figure 1. Microphotograph of liver mass, 10x

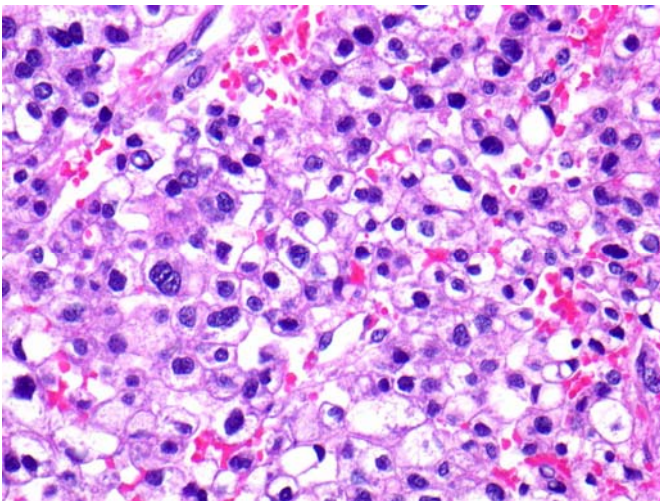


Figure 2. Microphotograph of liver mass, 40x