

# Gastrointestinal and Liver Pathology at Rush

1750 W. Harrison St., Suite 570, Chicago, IL 60612 ♦ (312) 942-5227 phone ♦ (312) 942-4228 fax

---

## Case of the Month Question – March 2010

*Contributed by Drs. Dawn Bradly and Shriram Jakate*

A 21 y/o Caucasian male with a history of asthma presents to his PCP with increasing dysphagia for the past few months. He first noticed this symptom after he transferred to another town to attend a new university. He denies fever, nausea, vomiting, diarrhea, and weight loss. A recent trial with PPIs was unsuccessful in relieving his symptoms. Vital signs: T – 98.5 °F, BP – 118/20, P – 80, and RR – 12. An endoscopy was subsequently performed (Fig. 1).

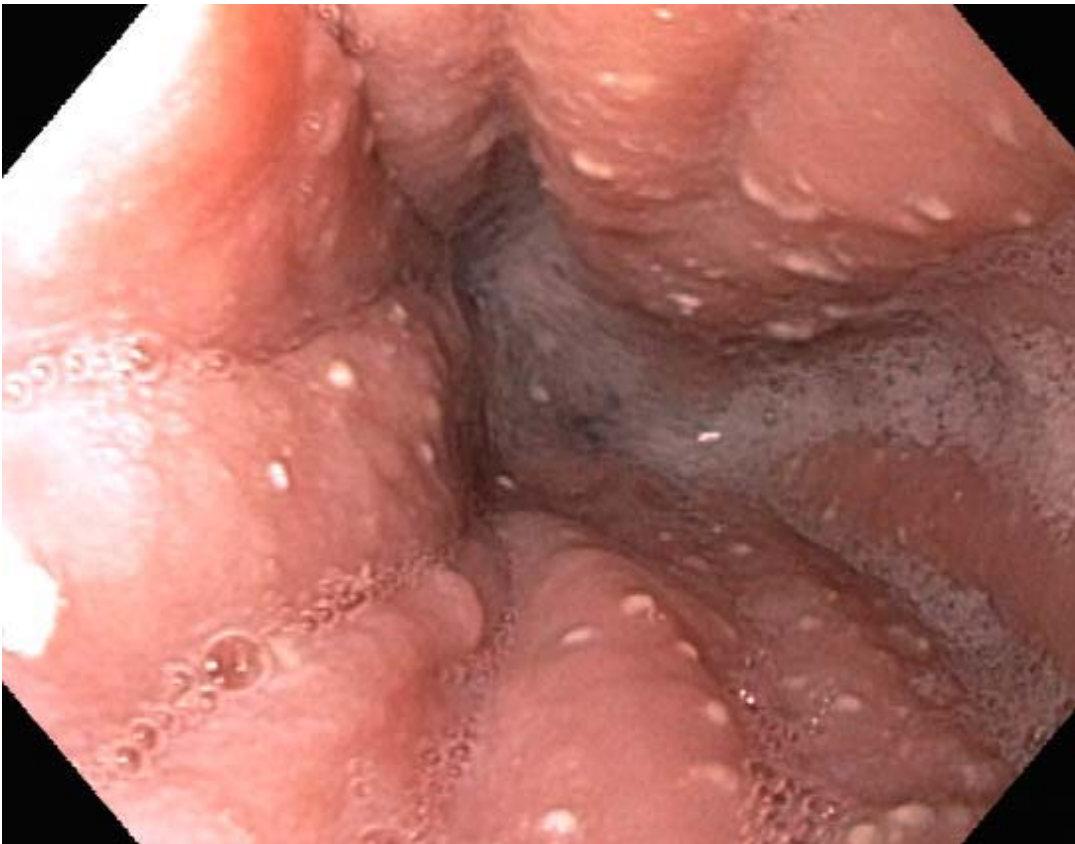


Fig. 1