

THE RUSH ELECTROPHYSIOLOGY PROGRAM

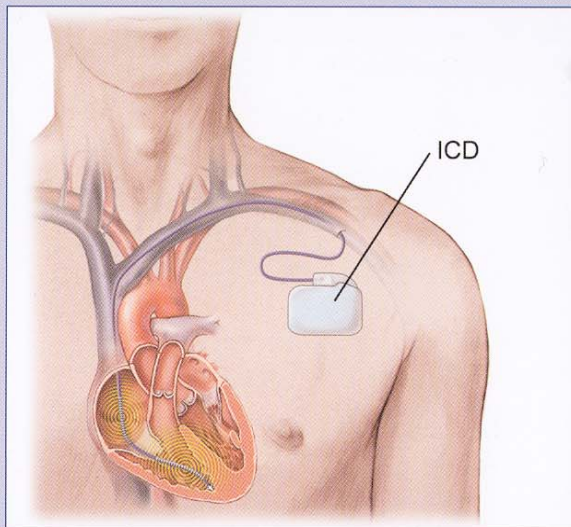
IMPORTANT, LIFE-SAVING INFORMATION

NEW Indications for ICD:

EF 35% or less

If your patient has heart failure and a left ventricular ejection fraction of 35% or less, he or she is a candidate for an ICD. Patients with ischemic heart disease without manifest heart failure and left ventricular ejection fractions $\leq 30\%$ are also ICD candidates.

Please detach and keep this card for handy reference. For more specific information on ICD indications, please see other side.



The RUSH Electrophysiology Program
1725 W. Harrison St., Suite 1159
Chicago, IL 60612
Departmental information line: (312) 942-6858
Physician referral fax: (312) 942-5862

NEW INDICATIONS FOR IMPLANTABLE CARDIAC DEFIBRILLATORS (ICD) INCLUDE:

Non-ischemic dilated cardiomyopathy (NIDCM)
9 months, plus NYHA Class II/III and LVEF
 $\leq 35\%$

or

Ischemic dilated cardiomyopathy (ICDM),
plus hx of prior MI, plus NYHA Class II/III and
LVEF $\leq 35\%$

Other indications for ICD include:

Prior MI and EF $\leq 30\%$

or

Prior MI and EF $\leq 35\%$, and non-sustained VT
(≥ 3 beats) and inducible VT, VF at EP testing

or

Sustained VT, poorly tolerated

or

Cardiac arrest survivor 2° to VT, VF

Indications for cardiac resynchronization
therapy include:

Any ICD indication, plus NYHA Class III/IV,
plus EF $\leq 35\%$, plus QRS ≥ 120 ms, plus
persistent symptoms despite OPT

The RUSH Electrophysiology Program
1725 W. Harrison St., Suite 1159
Chicago, IL 60612
Departmental information line: (312) 942-6858
Physician referral fax: (312) 942-5862