

Gastrointestinal and Liver Pathology at Rush

1750 W. Harrison St., Suite 570, Chicago, IL 60612 ♦ (312) 942-5227 phone ♦ (312) 942-4228 fax

Case of the Month Question – March 2009

Contributed by Drs. Dawn Bradly and Shriram Jakate

A 42 y/o Caucasian male presents to the emergency room with a history of rheumatoid arthritis and a five month history of fatigue, dyspnea, and constipation. Vital signs: T – 98.9 °F, BP – 128/84, P – 98, RR – 18, and O₂ sat – 98%. On physical exam, he had jaundice, scattered ecchymoses, hepatomegaly, and bilateral lower extremity edema. Urinalysis showed proteinuria. Low-power (Fig. 1) and high-power (Fig. 2) views of his liver biopsy are provided below:

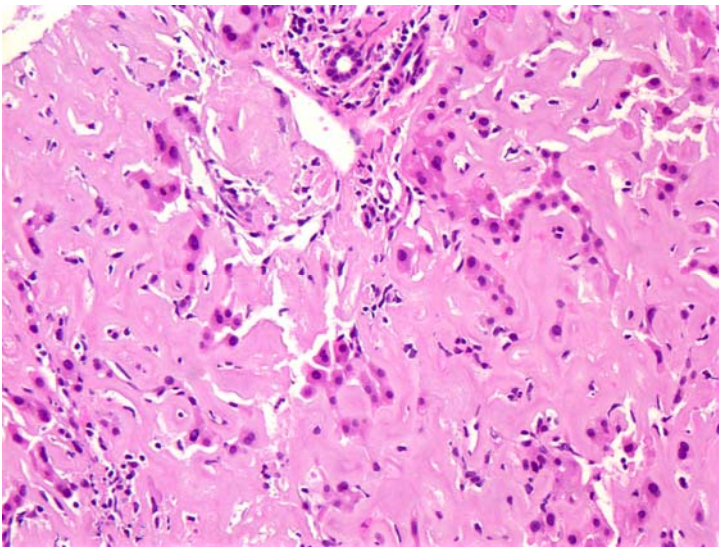


Fig. 1

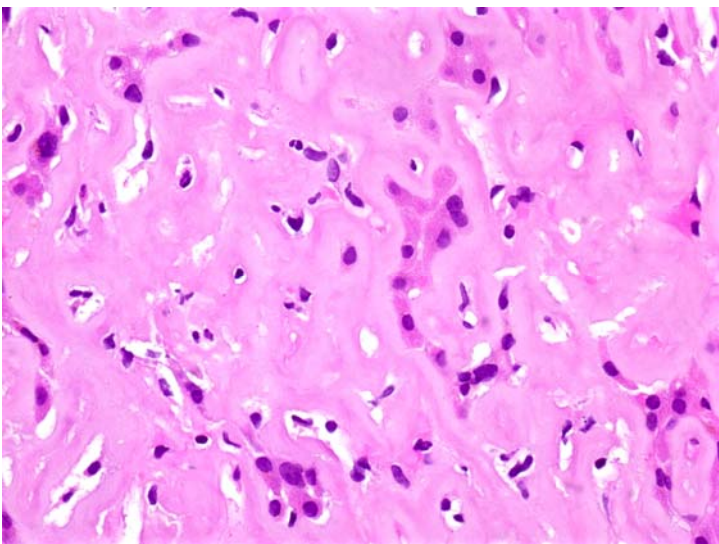


Fig. 2