

Gastrointestinal and Liver Pathology at Rush

1750 W. Harrison St., Suite 570, Chicago, IL 60612 ♦ (312) 942-5227 phone ♦ (312) 942-4228 fax

Case of the Month Question – March 2008

Contributed by Drs. Deborah Giusto and Shriram Jakate

A 54-year old man presented with signs and symptoms of acute appendicitis. The patient underwent an appendectomy. Three histological sections (Figures 1-3) of the appendix are provided below.

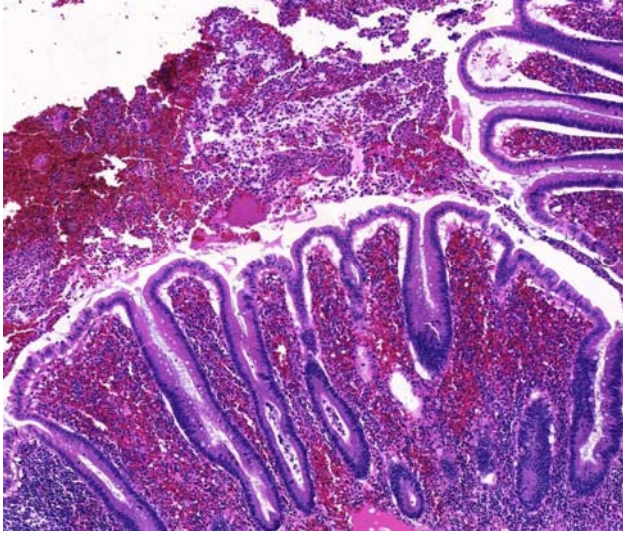


Figure 1. Micrograph showing hemorrhage and acute and chronic inflammation of the appendiceal mucosa (hematoxylin and eosin, 10x).

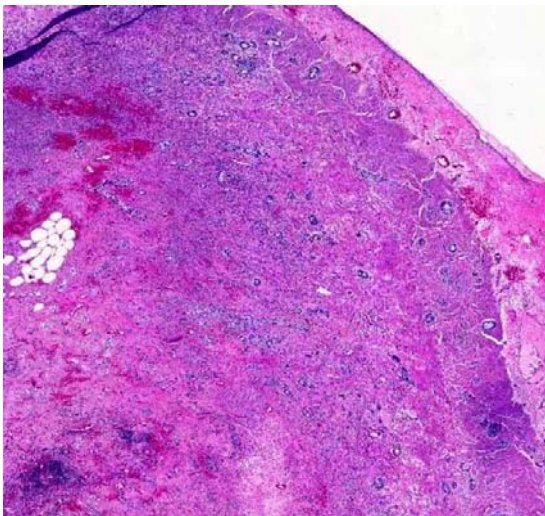


Figure 2. Micrograph showing a low power view of another section of the appendiceal wall (hematoxylin and eosin stain, 4x magnification).

Gastrointestinal and Liver Pathology at Rush

1750 W. Harrison St., Suite 570, Chicago, IL 60612 ♦ (312) 942-5227 phone ♦ (312) 942-4228 fax

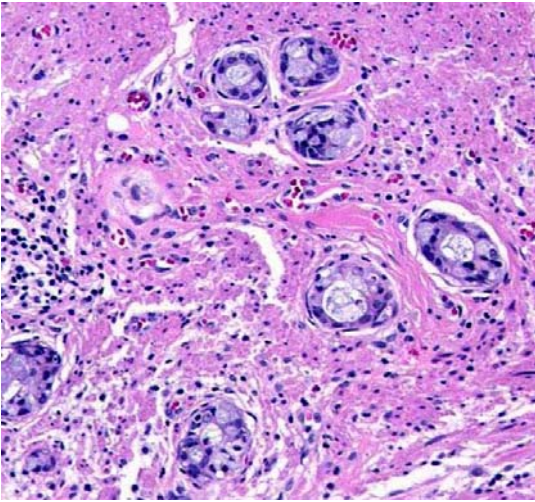


Figure 3. Micrograph showing a higher power view of the appendiceal wall showing bland goblet cell in muscularis propria (hematoxylin and eosin, 40x magnification)