

# Gastrointestinal and Liver Pathology at Rush

1750 W. Harrison St., Suite 570, Chicago, IL 60612 ♦ (312) 942-5227 phone ♦ (312) 942-4228 fax

---

## Case of the Month Answer – March 2008

*Contributed by Drs. Deborah Giusto and Shriram Jakate*

### **Diagnosis: Incidental goblet cell carcinoid of the appendix**

An appendectomy was performed for acute appendicitis and an incidental rare goblet cell carcinoid was found in the appendix. Goblet cell carcinoid of the appendix as a distinct entity was first described in 1974. The tumor shows small clusters of well differentiated composite goblet and neuroendocrine cells (positive for synaptophysin and chromogranin-Figure 1) invading deep into the appendiceal muscularis propria with perineural invasion. Goblet cell carcinoid (GCC) shares histological features of both adenocarcinoma and conventional carcinoid tumor and its aggressiveness lies somewhere between carcinoid and adenocarcinoma. While its malignant potential is intermediate, the management of GCC is controversial with opposing views on subsequent right hemicolectomy (Reference: Management of Goblet Cell Carcinoid. Journal of Surg Onc 2006;94:396-402).

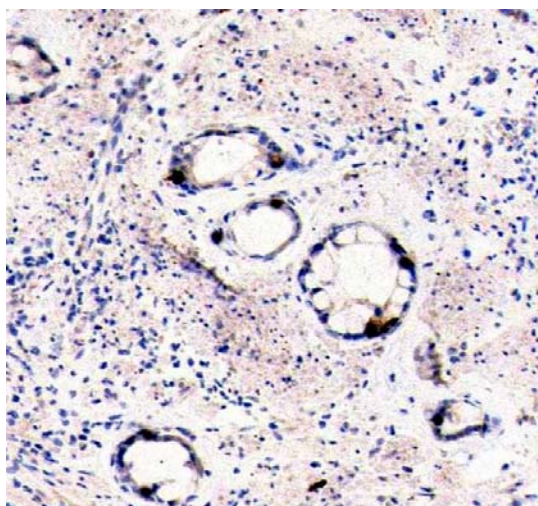


Figure 4: Chromogranin immunohistochemical stain (40 x magnification)