

# Gastrointestinal and Liver Pathology at Rush

1750 W. Harrison St., Suite 570, Chicago, IL 60612 ♦ (312) 942-5227 phone ♦ (312) 942-4228 fax

---

## Case of the Month Answer- December 2008

*Contributed by Drs. Deborah Giusto and Shriram Jakate*

Hidradenoma papilliferum primarily affects women between the ages of 30 and 50. The tumor occurs on the labia majora, perineum and perianal regions of women. These tumors have been described as being similar to tumors of the breast and sweat glands. These tumors present as asymptomatic, small, spherical, well-circumscribed lesions usually measuring less than 1-2 cm in diameter (Fig. 1). The epidermis may be normal, acanthotic or ulcerated. The tumor forms a fairly well demarcated nodule in the dermis or lamina propria and may sometimes show foci of continuity with the overlying epithelium (Fig. 1). The lesions consists primarily of epithelium-covered papillary processes that project into cystic spaces (Fig. 2). The epithelial lining is typically double layered, comprised of outer small myoepithelial cells with hyperchromatic nuclei and inner tall columnar cells with eosinophilic cytoplasm, sometimes showing decapitation secretion (Fig. 3).

Hidradenoma papilliferum is benign but can be confused clinically with a malignant tumor because of its propensity to ulcerate and its complex papillary structures. Malignant change in hidradenoma papilliferum is extremely rare. Only a few case reports of ductal carcinoma in situ arising in a hidradenoma papilliferum have been reported. The neoplastic cells lining the tubules and papillations express immunoreactivity for low molecular weight keratins, epithelial membrane antigen (EMA) and estrogen (Fig. 4).

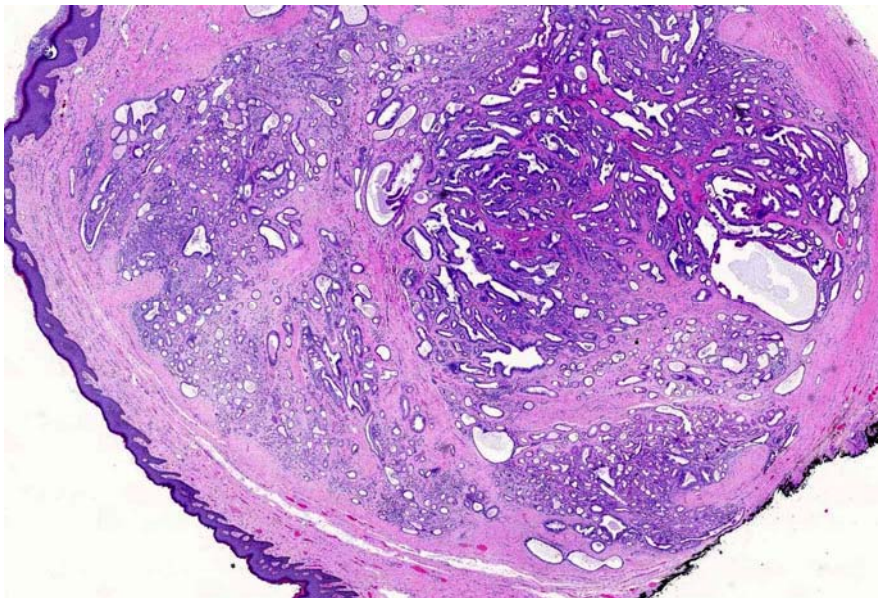


Fig. 1

# Gastrointestinal and Liver Pathology at Rush

1750 W. Harrison St., Suite 570, Chicago, IL 60612 ♦ (312) 942-5227 phone ♦ (312) 942-4228 fax

---

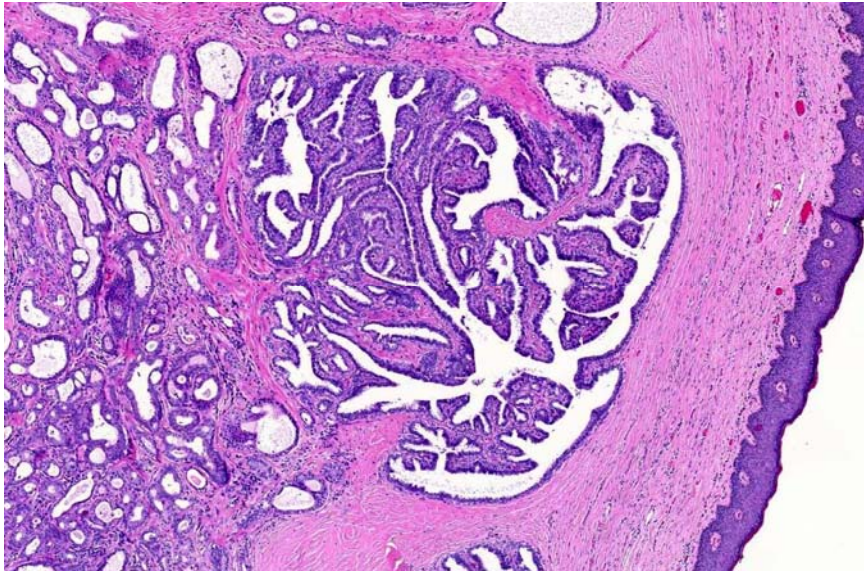


Fig. 2

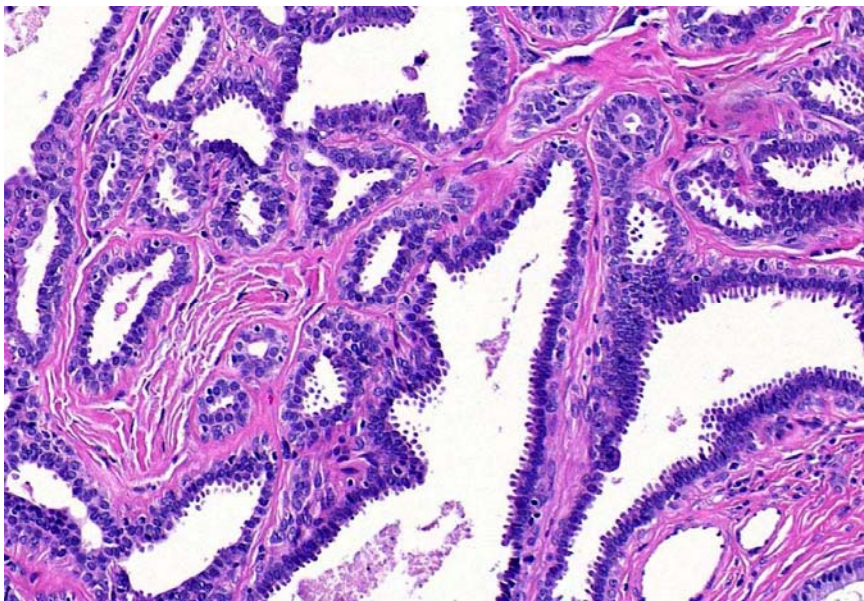


Fig. 3

## Gastrointestinal and Liver Pathology at Rush

1750 W. Harrison St., Suite 570, Chicago, IL 60612 ♦ (312) 942-5227 phone ♦ (312) 942-4228 fax

---

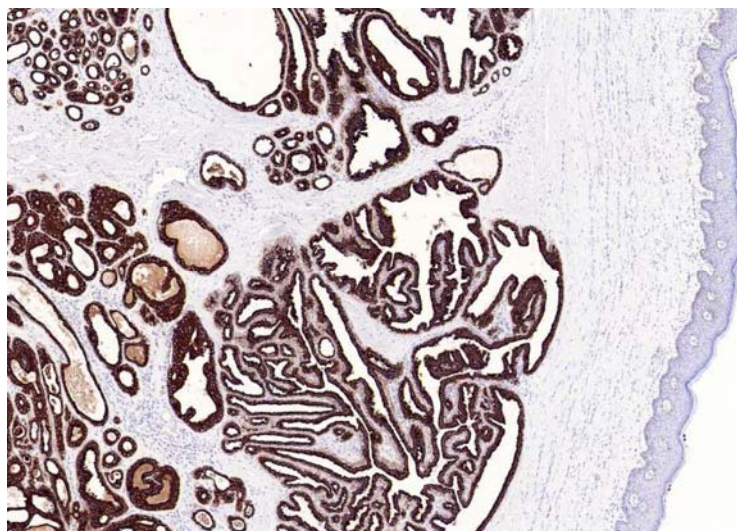


Fig. 4

### References:

1. McKee P. *Pathology of the Skin*. Gower Medical Publishing, 2001, pp 15.68-15.69.
2. Vazmitel M, Spagnolo DV, et al. Hidradenoma papilliferum: a case report and review of the literature. *Am J Dermatopathol* (2008), 39:2-4.