

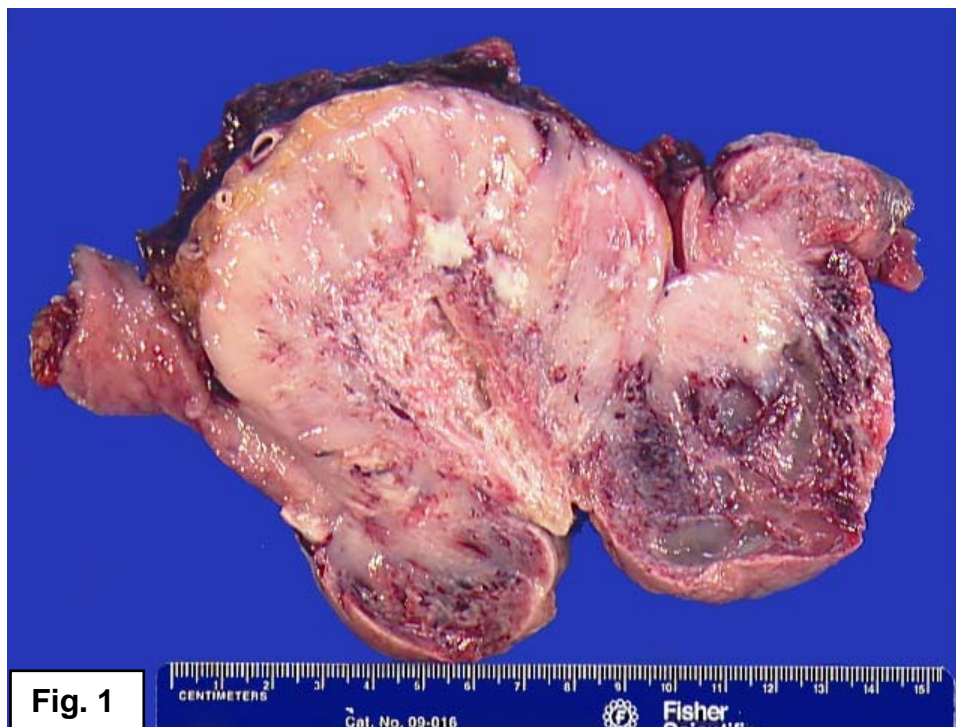
Gastrointestinal and Liver Pathology at Rush

1750 W. Harrison St., Suite 570, Chicago, IL 60612 ♦ (312) 942-5227 phone ♦ (312) 942-4228 fax

Case of the Month Question – February 2011

Contributed by Drs. Michelle Collier and Shriram Jakate

A 71 y/o male with past medical history of hypertension, coronary artery disease and MI presented with weight loss and anemia. EGD at an outside hospital showed a gastric mass. On imaging, the mass was found to extend into the pancreas and the patient underwent a total gastrectomy with distal pancreatectomy. A photograph of the gross specimen is provided (Fig. 1) as well as a histophotograph of the mass (Fig. 2).



Gastrointestinal and Liver Pathology at Rush

1750 W. Harrison St., Suite 570, Chicago, IL 60612 ♦ (312) 942-5227 phone ♦ (312) 942-4228 fax

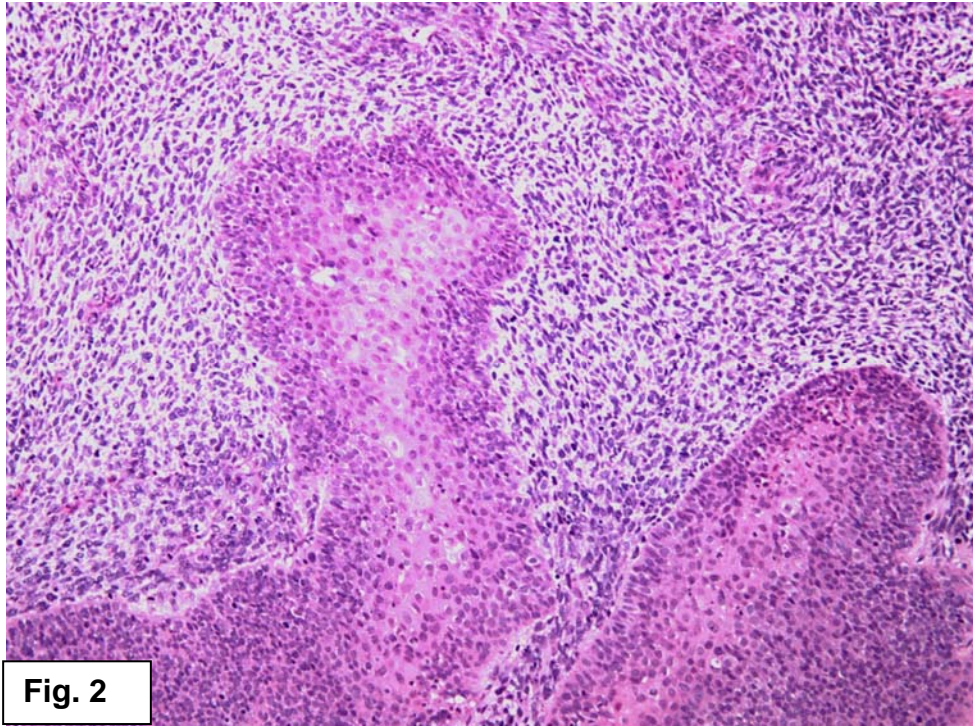


Fig. 2