

Gastrointestinal and Liver Pathology at Rush

1750 W. Harrison St., Suite 570, Chicago, IL 60612 ♦ (312) 942-5227 phone ♦ (312) 942-4228 fax

Case of the Month Question – April 2011

Contributed by Drs. Richa Jain and Shriram Jakate

A 67 y/o G0P0 female presented with chief complaint of constipation for 5 days. She was passing flatus and denied nausea or vomiting. An abdominopelvic CT scan revealed moderate ascites extending from liver to pelvis surrounding the small bowel and displacing the large bowel anterolaterally along with peritoneal metastatic disease. Paracentesis yielded 5.3L fluid, which was positive for adenocarcinoma. Colonoscopy was attempted but was incomplete due to a sigmoid colon stricture (Fig. 1). Biopsies were obtained from the stricture (Fig. 2).

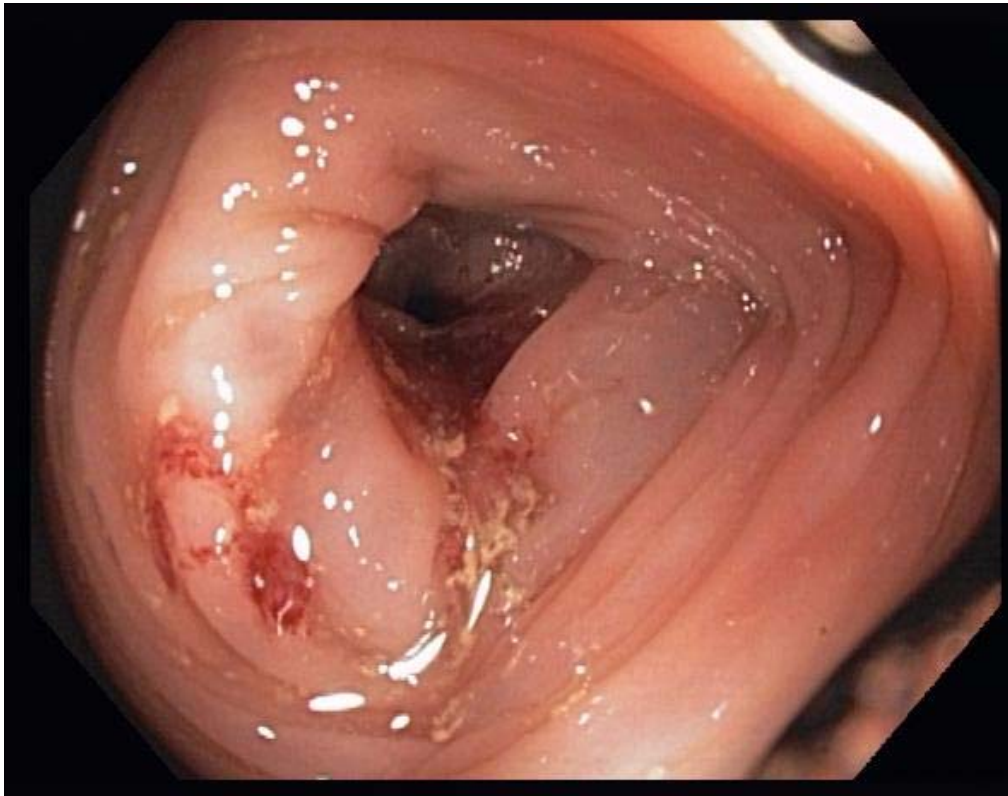


Fig. 1

Gastrointestinal and Liver Pathology at Rush

1750 W. Harrison St., Suite 570, Chicago, IL 60612 ♦ (312) 942-5227 phone ♦ (312) 942-4228 fax

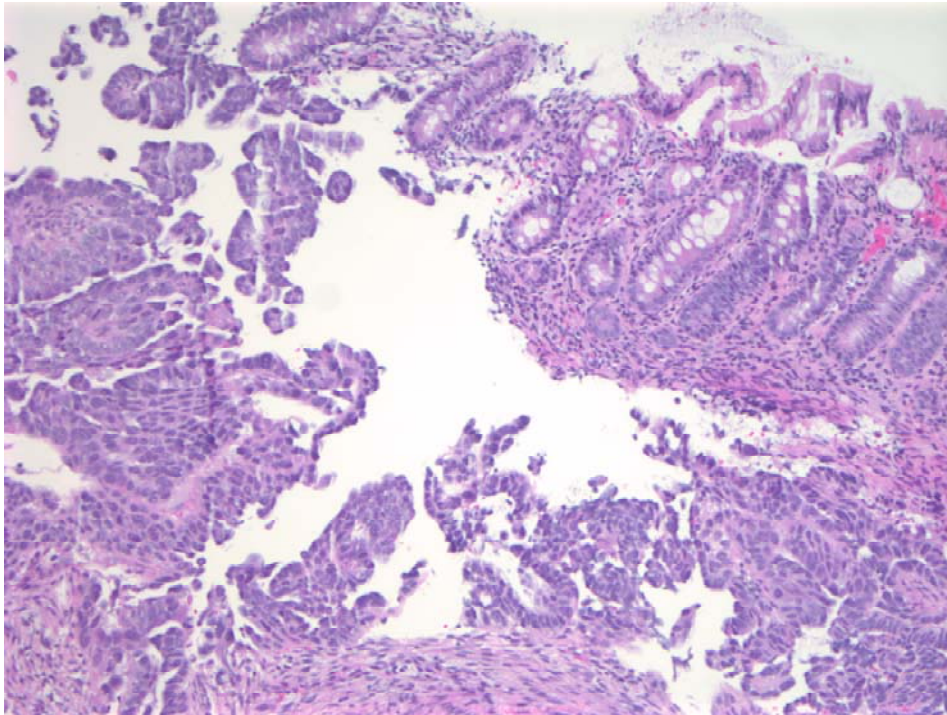


Fig. 2