

Gastrointestinal and Liver Pathology at Rush

1750 W. Harrison St., Suite 570, Chicago, IL 60612 ♦ (312) 942-5227 phone ♦ (312) 942-4228 fax

Case of the Month Question – April 2008

Contributed by Drs. Deborah Giusto and Shriram Jakate

A 67 year old women presents with abdominal pain, nausea, diarrhea and weight loss. A CT scan revealed a liver lesion. Two histological sections of the liver lesion are provided below.

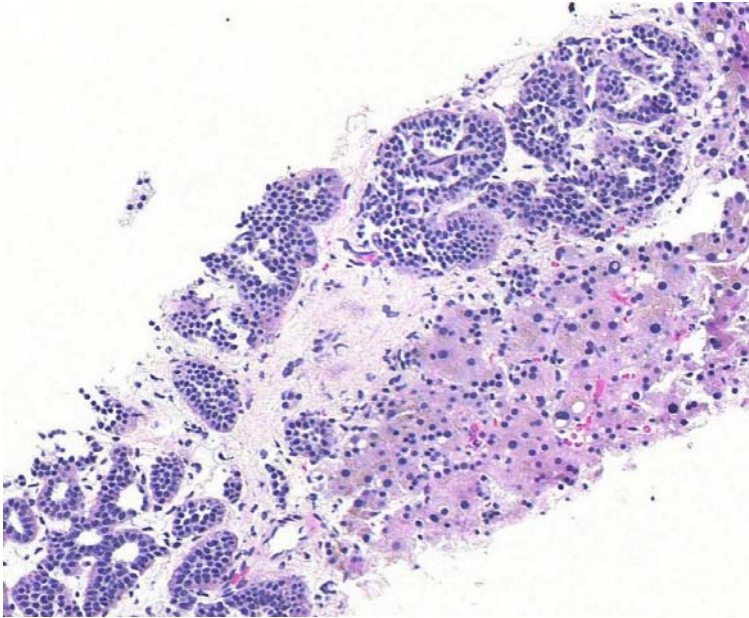


Figure 1. Micrograph showing liver lesion and surrounding liver parenchyma (40 x magnification)

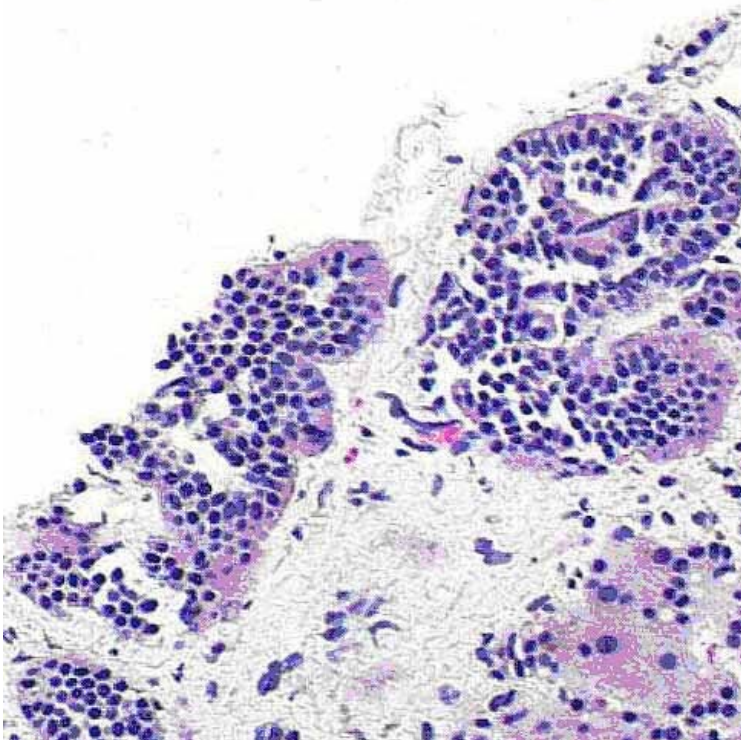


Figure 2. Micrograph showing a higher power view of the liver lesion (100x magnification)

Gastrointestinal and Liver Pathology at Rush

1750 W. Harrison St., Suite 570, Chicago, IL 60612 ♦ (312) 942-5227 phone ♦ (312) 942-4228 fax
