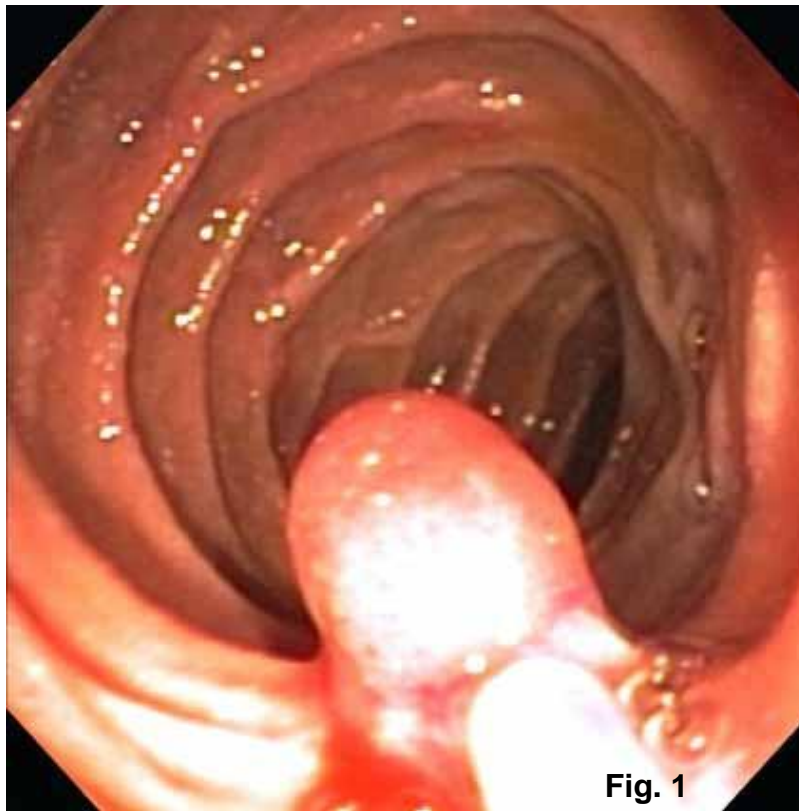


Case of the Month Question – August 2010

Contributed by Drs. Marlene Gallegos and Shriram Jakate

A 66 y/o Caucasian male with a past medical history of hypertension presented with a few days history of nausea, vomiting, and epigastric pain. Upper endoscopy showed a 1.0 cm well-circumscribed, pedunculated tan lesion at the second portion of the duodenum located 1.0 cm proximal to the major papilla. Endoscopic images and microphotographs of the lesion are provided below (Figures 1, 2 and 3).



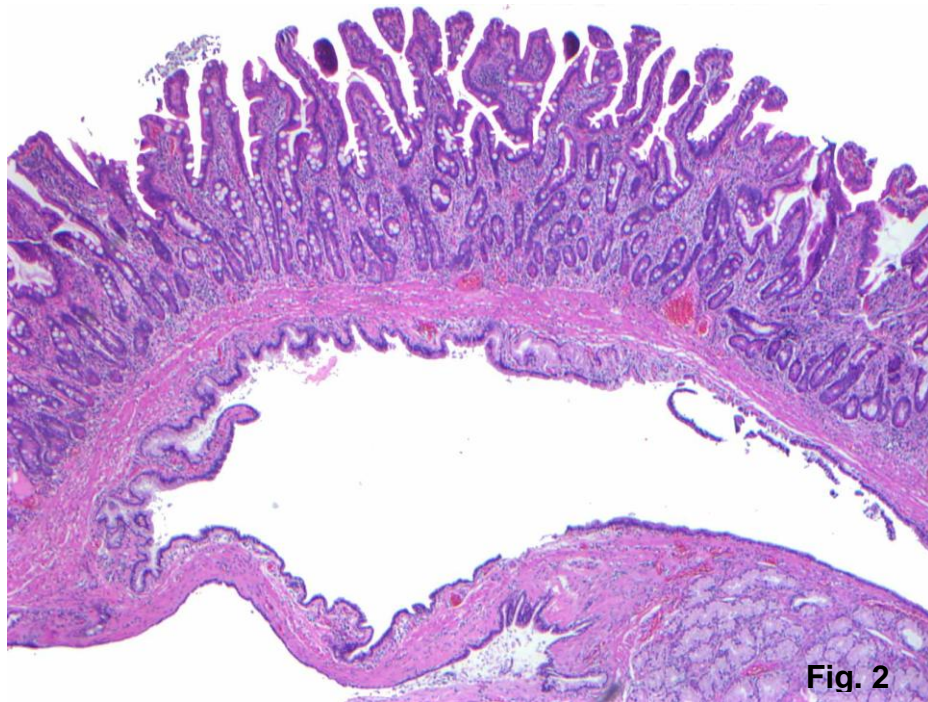


Fig. 2

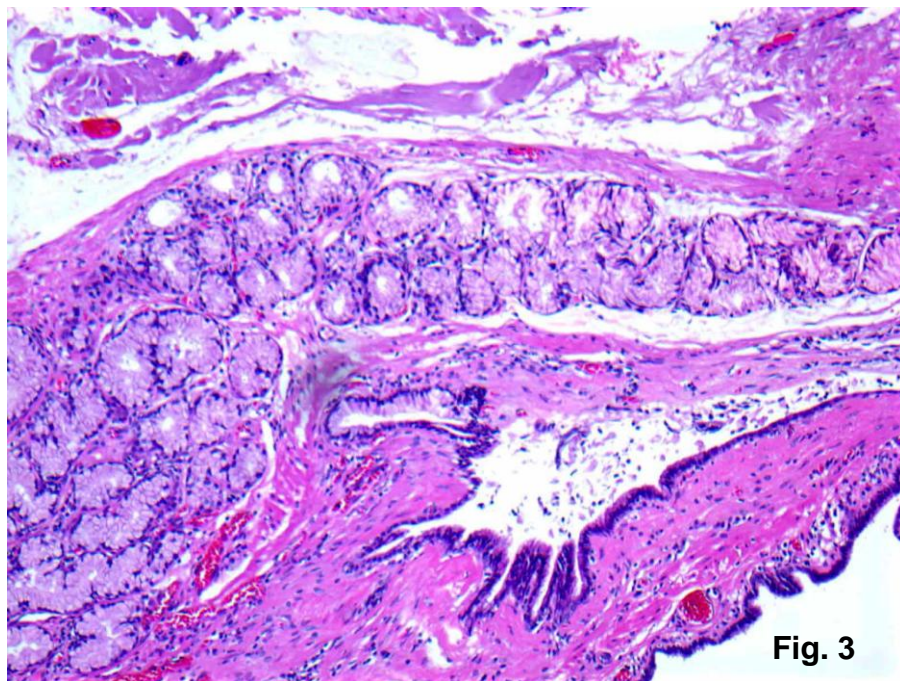


Fig. 3