



To refer patients or
request a consult,
call (312) 942-8905.

Physical Medicine and Rehabilitation Care at Rush

Physicians in the Rush Department of Physical Medicine and Rehabilitation (PM&R) diagnose and treat neurological and musculoskeletal diseases, conditions, disorders, and injuries, and provide individualized, comprehensive care to restore patients' functional ability and quality of life.

Our multidisciplinary, non-surgical approach draws upon physical, occupational and speech therapy, behavioral health, orthotics and prosthetics, and exercise trainers to help patients meet their family, work and recreational goals. The physiatrists at our in- and outpatient clinics are well versed in changes in strength; balance; gait; bowel, bladder and sexual function; motor planning; and a host of other neurologic and musculoskeletal impairments and disabilities.

Rush Rehab, our inpatient rehabilitation facility, provides multidisciplinary rehabilitation care for disabilities related to stroke, spinal injury, amputation and brain injury, along with complex medical care for cancer, COVID-19, multi-organ failure and critical illness, neuropathies and myopathies. We also care for the sickest of the sick after long hospitalizations and provide left ventricular assist device (LVAD) placement, as well as other complicated care.

Through a partnership with Select Medical, Rush Physical Therapy has added 62 new rehabilitation facilities, increasing access to care for patients in the Chicago area.

Why refer your patients here?

Rush Rehab, our inpatient rehabilitation facility, is fully integrated with the medical center, allowing for the seamless transition from acute hospital to recuperative care. Our faculty includes fellowship-trained pediatric and interventional spine/pain physicians along with providers who have board certifications in EMG, sports medicine and brain injury.

Rush is one of only four academic medical centers in the United States, and the only center in the Midwest, to be part of the Wounded Warrior Project's national medical network to connect wounded veterans and their families with world-class, individualized health care.

Rush's PM&R quality and safety metrics meet or exceed regional benchmarks in the following areas: actual length of stay, functional outcomes, and falls with injury.

Providers in the Rush Wheelchair Clinic offer patients custom outfitting of motorized wheelchairs, standard lightweight wheelchairs or motorized scooters, tailoring each wheelchair for optimal mobility and comfort.

Locations

Rush Rehabilitation (inpatient) Johnston R. Bowman Center

710 S. Paulina St.
Chicago, IL 60612

Rush PM&R

1725 W. Harrison St.
Suite 855
Chicago, IL 60612

Rush PM&R

1725 W. Harrison St.
Suite 118
Chicago, IL 60612

Rush Lincoln Park

2835 N. Sheffield Ave.
Suite 104
Chicago, IL 60657

Rush Oak Brook

2011 York Road
Oak Brook, IL 60523

Rush Oak Park

610 S. Maple Ave.
Suite 5500
Oak Park, IL 60304

Rush River North

539 N. Dearborn St.
Chicago, IL 60654

Rush South Loop

1411 S. Michigan Ave.
Chicago, IL 60605

Conditions We Treat

- Amyotrophic lateral sclerosis
- Back pain
- Balance disorders
- Bell's palsy
- Brain tumor
- Bursitis
- Capsulitis
- Carpal tunnel syndrome
- Cerebral palsy
- Chronic pain
- Concussion
- Degenerative disc disease
- Diabetic neuropathy
- Enterocele
- Fibromyalgia
- Headache
- Knee pain
- Lymphedema
- Multiple sclerosis
- Myofascial pain syndrome
- Neck pain
- Neuropathy
- Osteoarthritis
- Parkinsonism
- Plantar fasciitis
- Rotator cuff injury
- Sacroiliac joint pain
- Sciatica
- Shoulder dislocation
- Shoulder impingement
- Shoulder pain
- Tendonitis
- Traumatic brain injury
- Ulnar collateral ligament injury
- Vaginal pain
- Vertigo
- Vulvodynia

Tests and Treatments

- Acupuncture
- Baclofen pump maintenance
- Balance and equilibrium assessment and treatment
- Botulinum toxin injections
- Cardiopulmonary rehabilitation
- Chronic pain treatment
- Concussion evaluation and treatment
- Cortisone injection
- Craniosacral therapy
- Driving rehabilitation
- Electrodiagnostic services
- Motor point blocks
- Nerve blocks
- Nerve Conduction and electromyography test
- Nonsurgical musculoskeletal care and postsurgical care for orthopedic injuries
- Nonsurgical spine and back care and postsurgical care for spine and back injuries
- Pediatric rehabilitation
- Physical therapy
- Stroke management
- Trigger point injections

Meet our team



Sol Abreu-Sosa, MD
Physical Medicine & Rehabilitation
Board Certifications: Physical Medicine & Rehabilitation



Max A. Fitzgerald, MD
Physical Medicine & Rehabilitation
Board Certifications: Physical Medicine & Rehabilitation



Chirag M. Shah, MD
Physical Medicine & Rehabilitation
Board Certifications: Physical Medicine & Rehabilitation



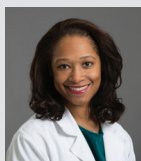
Daniel R. Bunzol, MD
Physical Medicine & Rehabilitation
Board Certifications: Physical Medicine & Rehabilitation, Electrodiagnostic Medicine



Ravi E. Kasi, MD
Physical Medicine & Rehabilitation
Board Certifications: Physical Medicine & Rehabilitation, Brain Injury Medicine



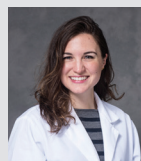
Hong Wu, MD
Physical Medicine & Rehabilitation, Pain Medicine
Board Certifications: Physical Medicine & Rehabilitation, Pain Medicine



Laura L. Deon, MD
Pediatric Rehabilitation Medicine, Physical Medicine & Rehabilitation
Board Certifications: Pediatric Rehabilitation Medicine, Physical Medicine & Rehabilitation



Andrew J. Patton, DO
Physical Medicine & Rehabilitation



Elizabeth R. Schrader, NP
Adult-Gerontology Primary Care Nurse Practitioner
Board Certifications: Adult-Gerontology Primary Care Nurse Practitioner



Sheila Dugan, MD
Physical Medicine & Rehabilitation, Sports Medicine
Board Certifications: Physical Medicine & Rehabilitation, Sports Medicine



Courtney Stefanski, MD
Physical Medicine & Rehabilitation
Board Certifications: Physical Medicine & Rehabilitation

For general inquiries regarding Physical Medicine and Rehabilitation at Rush, contact Katherine Fasullo, RN at (312) 942-8905
Website: rush.edu/pm-and-r